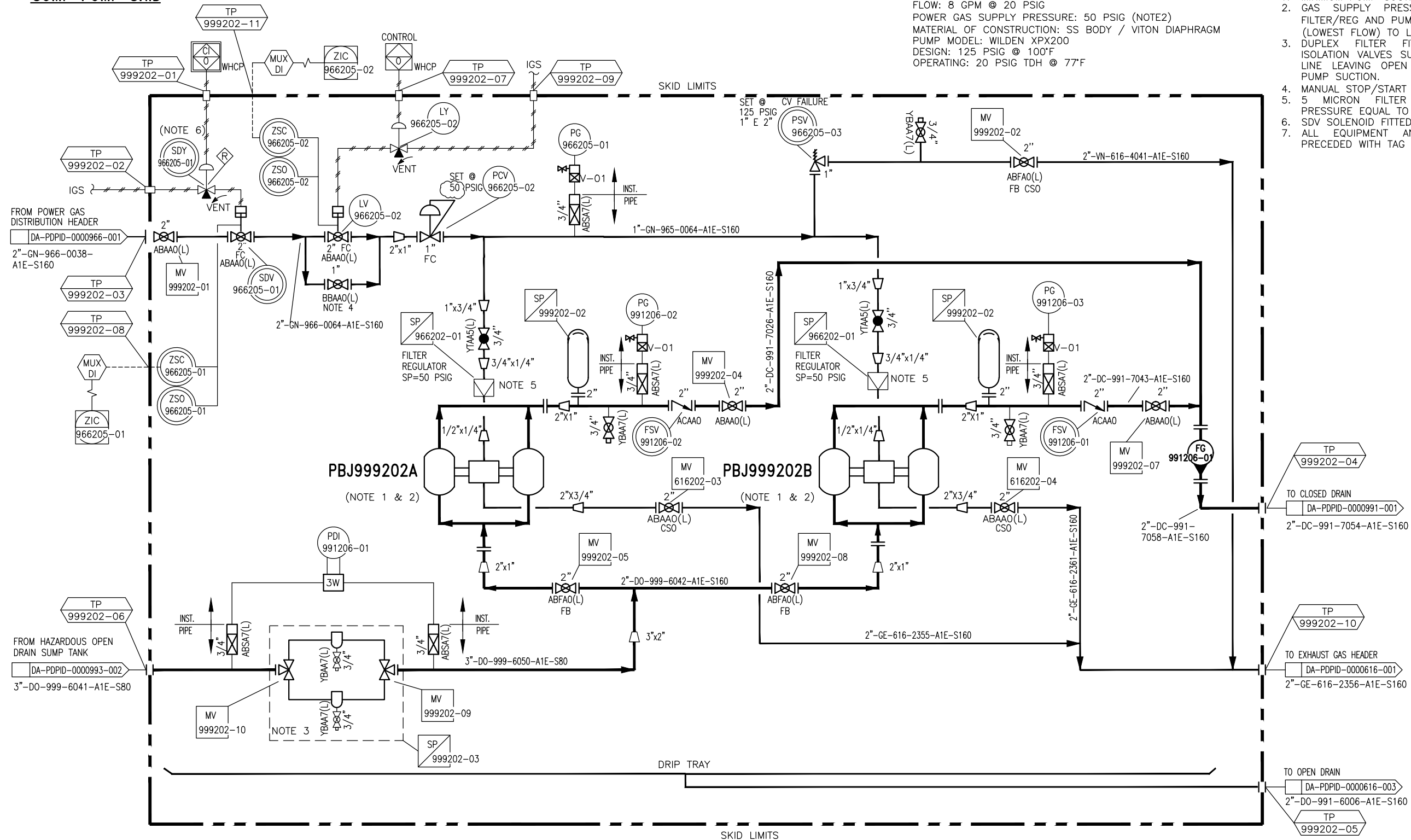


VPBJ999202
SUMP PUMP SKID



PBJ999202A/B

SUMP PUMP:
FLOW: 8 GPM @ 20 PSIG
POWER GAS SUPPLY PRESSURE: 50 PSIG (NOTE2)
MATERIAL OF CONSTRUCTION: SS BODY / VITON DIAPHRAGM
PUMP MODEL: WILDEN XPX200
DESIGN: 125 PSIG @ 100°F
OPERATING: 20 PSIG TDH @ 77°F

NOTES:

1. MINIMUM PUMP SUCTION SIZE 1"
2. GAS SUPPLY PRESSURE ADJUSTED TO 50 PSIG BY FILTER/REG AND PUMP FLOW SETTING SET @ '1' (LOWEST FLOW) TO LIMIT MAX. FLOW TO APPROX 8 GPM.
3. DUPLEX FILTER FITTED WITH MECHANICALLY LINKED ISOLATION VALVES SUCH THAT ONE FILTER IS ALWAYS ON LINE LEAVING OPEN FLOW PATH FROM SUMP TANK TO PUMP SUCTION.
4. MANUAL STOP/START FOR TESTING.
5. 5 MICRON FILTER REQUIRED AND REGULATOR SET PRESSURE EQUAL TO 50 PSIG.
6. SDV SOLENOID FITTED WITH LOCAL MANUAL RESET.
7. ALL EQUIPMENT AND INSTRUMENT TAGS SHALL BE PRECEDED WITH TAG NGBN.



**INTEGRATED
FLOW SOLUTIONS**

6461 REYNOLDS RD, TYLER, TEXAS, USA 75708
PHONE NUMBER: +1 (903) 595-6511
EMAIL: SUPPORT@IFSOLUTIONS.COM

THIS DRAWING IS THE PROPERTY OF INTEGRATED FLOW SOLUTIONS AND SHALL NOT BE REPRODUCED, COPIED, LENT, NOR USED FOR ANY PURPOSE OTHER THAN THAT WHICH IT IS FURNISHED EXCEPT BY WRITTEN PERMISSION.

3	21OCT14	AS BUILT	MCS	JB	LA
2	24FEB14	REVISED PER ENGINEERING	MCS	JB	LA
1	11NOV13	REVISED FOR ENGINEERING	MCS	JB	LA
0	13DEC12	APPROVED FOR CONSTRUCTION	JG	CA	LA
A	28SEP12	ISSUED FOR CUSTOMER APPROVAL	JG	KC	LA
REV.	DATE	DESCRIPTION	DES	ENG/CHK	PM/API


CRAYMOND NIG. LTD

PROJECT: SATELLITE FIELDS DEVELOPMENT
PROJECT-PHASE 2
CUSTOMER NAME: DELTA AFRIK ENGINEERING LTD.
END USER:
SYSTEM DESCRIPTION: IDOHO N SUMP PUMP SKID
TAG NUMBER: NGBN-VPBJ999202
CUSTOMER PO#: 10108-1004

PIPING & INSTRUMENTATION DIAGRAM
SUMP PUMP SKID
(NGBN-VPBJ999202)

CLIENT No.: NGBN-CY-VDPID-0050388

SCALE: NONE

PM.: L. AGUILAR

SECTION

JOB	
-----	--

SHEET

TOTAL SHEETS

REV.

P - 25057- 01

1

3