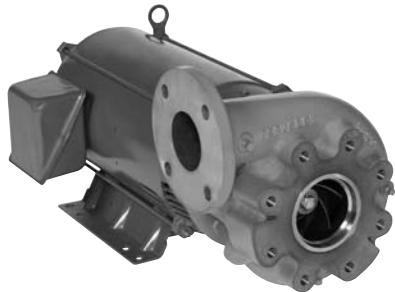
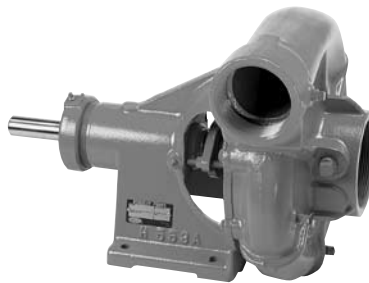


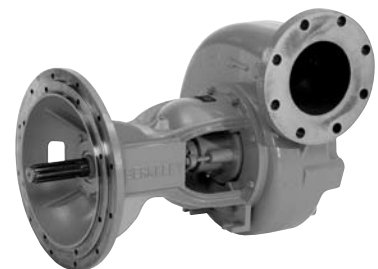
TYPE B CENTRIFUGAL PUMPS PUMP PERFORMANCE



CCMD
Close Coupled Motor Drive

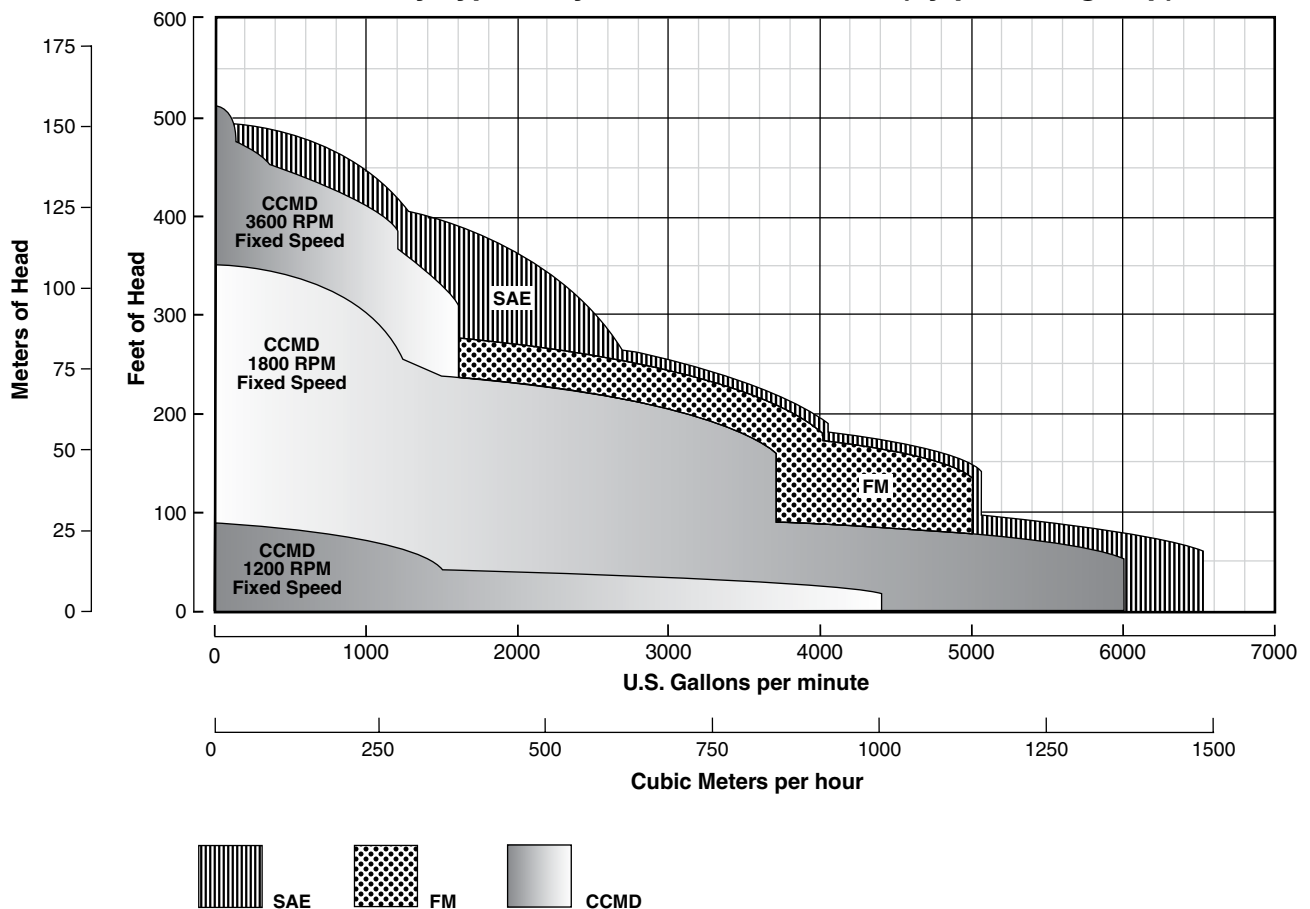


FM
Frame Mount



ENGINE DRIVE
SAE

Berkeley Type B Hydraulic Performance (by product group)





PUMP MODEL NOMENCLATURE

NAME PLATE EXAMPLE:

B 4 G P B H S**B — TYPE OF CONSTRUCTION**
B = "Back Pull-Out" Design**4 — DISCHARGE SIZE (Inches)****G — NOMINAL IMPELLER DIAMETER (Inches)**

3" = A	7" = W	11" = F	15" = EX	18" = EY
4" = M	8" = Y	12" = G	15.5" = XT	19" = EZ
5" = X	9" = Z	13" = J	16" = ET	20" = EE
6" = T	10" = E	14" = N	17" = EW	

P — TYPE OF DRIVE
P = Electric Motor – Pump Attached Directly to Motor Frame
Q = Engine Drive – Pump Attached Directly to Engine Frame
R = Frame Mounted Belt or Flexible Coupling Drive
RM = Special Duty Mounting Frame**B — SPECIAL FEATURES (Optional)**
B = Hydraulically Balanced Impeller Design
K = Self-Priming**H — RELATIVE CAPACITY OF IMPELLER**
LL = Very Low
L = Low
M = Medium (Often Omitted)
H = High
HH = Very High**2 — NUMBER OF STAGES (Optional)**
(Single stages not indicated)**S — SHAFT SEAL (Optional)**
S = Mechanical Seal (Packed Stuffing Box is not indicated)**10 — HORSEPOWER OF MOTOR OR ENGINE (Optional)**
(Normally indicated on Engine Driven Pumps only)

The model configurations above illustrate the complete range of closed coupled product identification numbers.

PUMP SIZE EXAMPLE:

4" x 6" x 13" B H**4" — DISCHARGE SIZE (Inches)****6" — SUCTION SIZE (Inches)****13" — NOMINAL IMPELLER DIAMETER (Inches)**

3" = A	7" = W	11" = F	15" = EX	18" = EY
4" = M	8" = Y	12" = G	15.5" = XT	19" = EZ
5" = X	9" = Z	13" = J	16" = ET	20" = EE
6" = T	10" = E	14" = N	17" = EW	

B — SPECIAL FEATURES (Optional)
B = Hydraulically Balanced Impeller Design**H — RELATIVE CAPACITY OF IMPELLER**
LL = Very Low
L = Low
M = Medium (Often Omitted)
H = High
HH = Very High



TABLE OF CONTENTS

MODEL	SERIES	PUMP SIZE	PAGE NO.
B1-1/2M_S	M	1-1/2 x 1 x 3	4-5
B1-1/2T_L	T	1-1/2 x 2 x 6L	6-7
B1-1/2T_M		1-1/2 x 2 x 6M	8-9
B2T_M		2 x 2-1/2 x 6M	10-11
B2-1/2T_M		2-1/2 x 3 x 6M	12-14
B3T_M		3 x 4 x 6M	15-17
B3T_H		3 x 4 x 6H	18-20
B3T_HH		3 x 4 x 6HH	21-22
B1W	W	1 x 1-1/2 x 7W	23-24
B5W		5 x 6 x 7W	25-26
B1-1/2Z_L	Z	1-1/2 x 2 x 9L	27-28
B1-1/2Z_HS		1-1/2 x 2 x 9HS	29-30
B1-1/2Z_HS		1-1/2 x 2 x 9H	31
B2Z_L		2 x 2-1/2 x 9L	32-33
B2Z_M		2 x 2-1/2 x 9M	34-35
B2Z_H		2 x 2-1/2 x 9H	36-37
B2-1/2Z_L		2-1/2 x 3 x 9L	38-40
B2-1/2Z_M		2-1/2 x 3 x 9M	41-42
B3Z_L		3 x 4 x 9L	43-44
B3Z_M		3 x 4 x 9M	45-46
B3Z_BH		3 x 4 x 9BH	47-48
B6Z_L		6 x 8 x 9L	49-50
B6Z_M-CCW		6 x 8 x 9M-CCW	51-52
B6Z_H		6 x 8 x 9H	53-54
B1-1/2E_L	E	1-1/2 x 2 x 10L	55-56
B2E_BL		2 x 3 x 10BL	57
B2E_L		2 x 3 x 10L	58-59
B2E_H		2 x 3 x 10H	60-61
B2E_BH		2 x 3 x 10BH	62
B2E_BHH		2 x 3 x 10BHH	63-64
B2E_HH		2 x 3 x 10HH	65-66
B3E_BL		3 x 4 x 10BL	67-68
B3E_M		3 x 4 x 10M	69-70
B4E_BM		4 x 5 x 10BM	71-72
B4E_M		4 x 5 x 10M	73-74
B5E_BM		5 x 6 x 10BM	75-76
B5E_H		5 x 6 x 10H	77-78
B5E_BH		5 x 6 x 10BH	79
B4G_BH	G	4 x 5 x 12BH	80-81
B8G_BM		8 x 10 x 12BM	82-84
B10G_BM - 4 pole		10 x 12 x 12BM	85
B10G_BM - 6 pole		10 x 12 x 12BM	86-87
B2-1/2J_BL		2-1/2 x 4 x 13BL	88
B2-1/2J_BM	J	2-1/2 x 4 x 13BM	89-90
B3J_BL		3 x 4 x 13BL	91-92
B3J_BM		3 x 4 x 13BM	93-94
B4J_BH		4 x 5 x 13BH	95-96
B4J_BHH		4 x 6 x 13BHH	97-98
B6J_BL		6 x 8 x 13BL	99-100
B6J_BM		6 x 8 x 13BM	101-102
B6J_BM-CW		6 x 8 x 13BM-CW	103-104
B6J_BH		6 x 8 x 13BH	105-106
B4EX_BL	EX	4 x 5 x 15BL	107-108
B5EX_BH		5 x 6 x 15BH	109-110
B6EX_BL		6 x 5 x 15BL	111-112
B6EX_BM		6 x 8 x 15BM	113
B6EX_BH		6 x 8 x 15BH	114-115
B6XT_BH-15.5"		6 x 8 x 15.5BH	116
B6XT_BH-14"		6 x 8 x 14BH	117-118
B4EY_BM	EY	4 x 5 x 18BM	119-120
B4EY_BH		4 x 5 x 18BH	121-122
PRODUCT INDEX			123



Pump Size: 2-1/2 x 4 x 13 BL

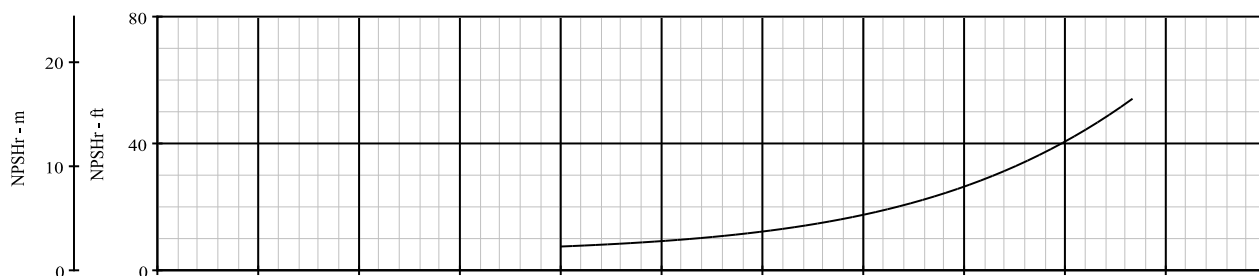
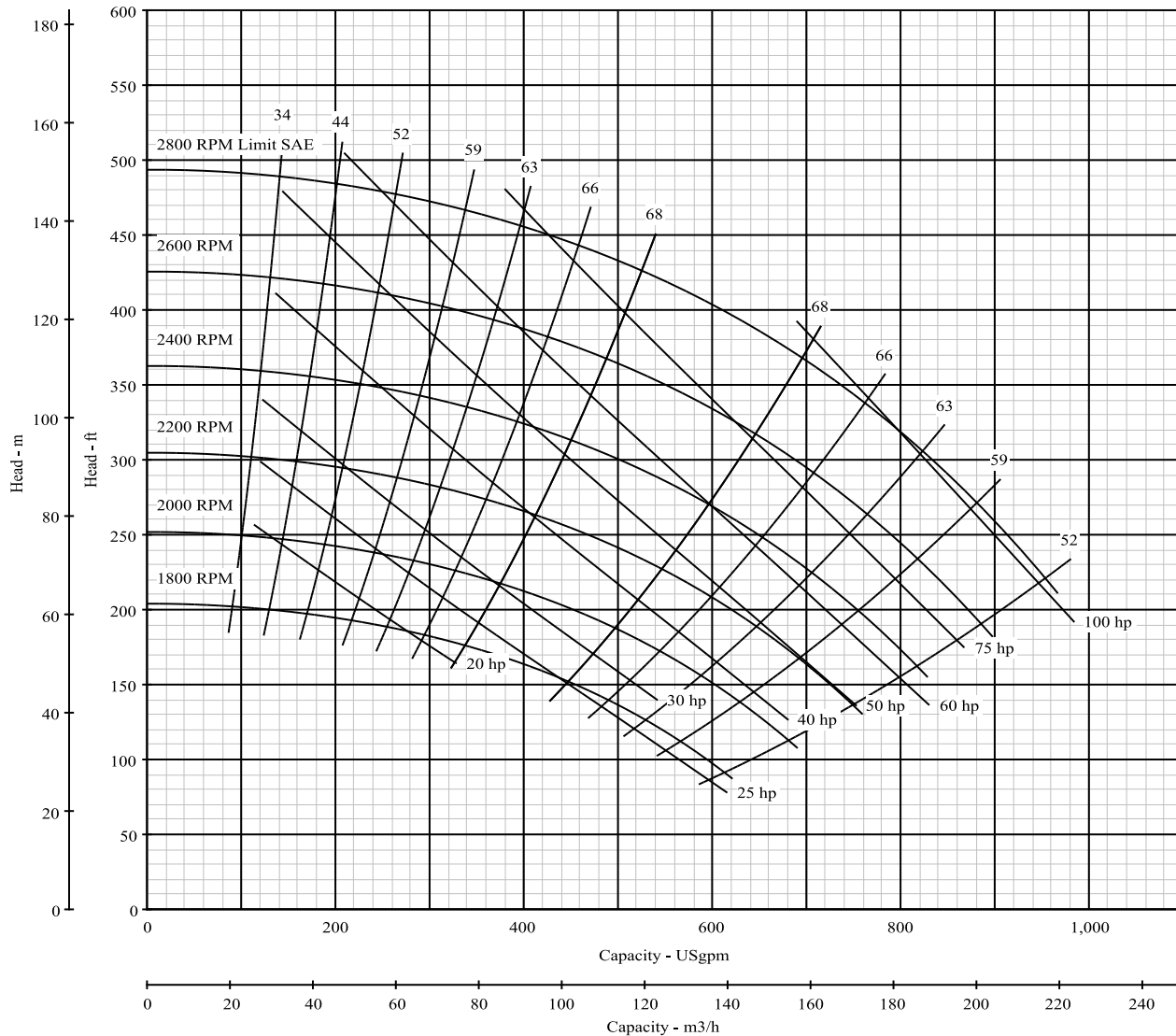
Model: B2-1/2J_BL

Curve No. 7045

Type	CCMD	FM CPLG	FM BELT	SAE	Hydraulic	AC Engine
Model				B2-1/2JQBL		
RPM				1600-2800		

Dia. 13.50"

Nominal RPM: **VARIOUS**
Based on Fresh Water@
Maximum Working Pressure:
68 deg. F.
266 PSI



*NPSH data shown is at maximum speed

CURVE NO.	SERIES	MAXIMUM IMPELLER DIAMETER	PUMP SIZE		MODELS					FIXED SPEED			VARIABLE SPEED				
			DSCHG. x SUCT. x IMPELLER DIA.	MODEL	CCMD (1)	FM CPLG (2)	FM BELT (3)	SAE (4)	HYD (5)	3600 RPM	1800 RPM	1200 RPM	CCMD	FM CPLG	FM BELT	SAE	HYD
2676	M	3"	1-1/2x1x3	B1-1/2M_S		B1-1/2MRS	B1-1/2MRS			X				2800-4900	2800-4900		
5035			1-1/2x2x6L	B1-1/2T_L	B1-1/2TPL	B1-1/2TRLS	B1-1/2TRLS			X			1801-3600	1800-3500	1800-3500		
8888			1-1/2x2x6M	B1-1/2T_M	B1-1/2TPM					X			1801-3600				
8578			2x2-1/2x6M	B2T_M	B2TPM					X			1801-3600	1800-3000	1800-3000		
8477			2-1/2x3x6M	B2-1/2T_M	B2-1/2TPM	B2-1/2TRMS	B2-1/2TRMS			X	X		1201-3600	1400-2800	1400-2800		
5005			3x4x6M	B3T_M	B3TPM	B3TRMS	B3TRMS			X	X		1201-3600	1400-2400	1400-2400		
9068			3x4x6H	B3T_H	B3TPH					X	X		1201-3600				
9069			3x4x6HH	B3T_HH	B3TPHH					X			1801-3600				
8233			1 x 1-1/2 x 7W	B1W	B1WP					X			1801-3600				
3524	W	7"	5x6x7W	B5W	B5WP						X		1201-1800				
5036			1-1/2x2x9L	B1-1/2Z_L	B1-1/2ZPL	B1-1/2ZRL	B1-1/2ZRL			X			1801-3600	1000-3600	1000-3600		
9086			1-1/2x2x9H	B1-1/2Z_HS	B1-1/2ZPHS					X	X		1201-3600				
3558			1-1/2x2x9H	B1-1/2Z_HS	B1-1/2ZPHS								1201-3600				
8553			2x2-1/2x9L	B2Z_L	B2ZPL	B2ZRL				X			1801-3600	1000-3600			
2070			2x2-1/2x9M	B2Z_M		B2ZRM	B2ZRM	B2ZQM			X			1000-2800	1000-2800	1800-3200	
8940			2x2-1/2x9H	B2Z_H	B2ZPH					X			1801-3600				
5040			2-1/2x3x9L	B2-1/2Z_L	B2-1/2ZPL	B2-1/2ZRL	B2-1/2ZRL			X	X		1801-3600	1400-3400	1400-2700		
5020			2-1/2x3x9M	B2-1/2Z_M	B2-1/2ZPM	B2-1/2ZRM	B2-1/2ZRM	B2-1/2ZQM			X		1201-1800	1400-3400	1400-2700	1800-2600	
5006			3x4x9L	B3Z_L	B3ZPL					X			1201-3600				
5021			3x4x9M	B3Z_M	B3ZPM	B3ZRM	B3ZRM	B3ZQM	B3ZRM-HYD		X		1201-1800	1400-2500	1400-2300	1600-2500	1400-2500
8512			3x4x9BH	B3Z_BH	B3ZPBH					X			1801-3600				
5838			6x8x9L	B6Z_L	B6ZPL	B6ZRL	B6ZRL	B6ZQL			X		1201-1800	1400-2300	1400-2100	1200-1800	
7417			6x8x9M-CCW	B6Z_M-CCW		B6ZRM-CCW	B6ZRM-CCW				X			1600-2200	1600-2200		
9027			6x8x9H	B6Z_H	B6ZPH	B6ZRH	B6ZRH	B6ZQH			X		1201-1800	1200-2000	1200-1900	1200-1800	
9089			1-1/2x2X10L	B1-1/2E_L	B1-1/2EPL	B1-1/2ERL	B1-1/2ERL	B1-1/2EQL		X			1801-3600	1800-3000	1800-2800	2000-3200	
6541			2x3X10BL	B2E_BL	B2EPBL					X							
6541A			2x3x10L	B2E_L		B2ERL	B2ERL				X			1800-3400	1800-2900		
7626			2x3x10H	B2E_H		B2ERH	B2ERH				X			1600-2800	1600-2400		
6657			2x3x10BH	B2E_BH		B2ERBH	B2ERBH							1400-3200	1400-3200		
8671			2x3X10BHH	B2E_BHH	B2EPBHH					X			1801-3600				
8648			2x3X10HH	B2E_HH		B2ERHH	B2ERHH	B2EQHH			X			1400-2800	1400-2600	1600-3200	
8904			3x4x10BL	B3E_BL	B3EPBL	B3ERBL	B3ERBL	B3EQBL		X			1801-3600	1400-3500	1400-3500	1800-3500	
6545			3x4x10M	B3E_M	B3EPM	B3ERM	B3ERM				X		1201-1800	1400-2200	1400-2000		
8989			4x5x10BM	B4E_BM	B4EPBM	B4ERBM	B4ERBM			X			1801-3600	1400-3600	1400-2800		
6425			4x5x10M	B4E_M	B4EPM	B4ERM	B4ERM	B4EQM			X		1201-1800	1400-2000	1400-1800	1800-3100	
8726			5x6x10BM	B5E_BM	B5EPBM					X			1801-3600				
7801			5x6x10H	B5E_H	B5EPH	B5ERH	B5ERH				X		1201-1800	1400-2000	1400-1800		
7801A			5X6X10BH	B5E_BH				B5EQBH								1600-2900	
1234			4x5x12BH	B4G_BH	B4GPBH	B4GRMBH	B4GRMBH	B4GQBH			X		1201-1800	1400-2400	1400-2200	1600-2400	
5028A			8x10x12BM	B8G_BM	B8GPBM	B8GRMBM	B8GRMBM	B8GQBM			X	X	901-1800	1200-2200	1200-1700	1000-2100	
7632			10x12x12BM	B10G_BM - 4 pole	B10GPBM	B10GRMBM	B10GRMBM	B10GQBM			X						
7512			10x12x12BM	B10G_BM - 6 pole	B10GPBM	B10GRMBM	B10GRMBM	B10GQBM				X	901-1200	1000-1800	1000-1700	900-1900	
7045			2-1/2x4x13BL	B2-1/2J_BL				B2-1/2JQBL								1600-2800	
6266			2-1/2x4x13BM	B2-1/2J_BM	B2-1/2JPBM	B2-1/2JRMBM	B2-1/2JRMBM	B2-1/2JQBM	B2-1/2JRMBM		X		1201-1800	1400-2700	1400-2700	1600-2800	1400-2800
5845			3x4x13BL	B3J_BL	B3JPBL						X		1201-1800				
5846			3x4x13BM	B3J_BM	B3JPBM	B3JRMBM	B3JRMBM	B3JQBM	B3JRMBM		X		1201-1800	1400-2700	1400-2700	1600-3000	1400-2700
9013			4x5x13BH	B4J_BH	B4JPBH	B4JRMBH	B4JRMBH	B4JQBH	B4JRMBH		X		1201-1800	1400-2400	1400-2200	1400-2400	1400-2400
9017			4x6x13BHH	B4J_BHH	B4JPBHH	B4JRMBHH	B4JRMBHH				X		1201-1800	1400-2400	1400-2200		
2729			6x8x13BL	B6J_BL	B6JPBL	B6JRMBL	B6JRMBL	B6JQBL			X		1201-1800	1200-2200	1200-2100	1600-2200	
8851			6x8x13BM	B6J_BM	B6JPBM-CW	B6JRMBM-CCW	B6JRMBM-CCW				X		901-1800	1200-2100	1200-1800		
8851A			6x8x13BM-CW	B6J_BM-CW		B6JRMBM-CW	B6JRMBM-CW	B6JQBM-CW			X			1200-2100	1200-1800	1400-2200	
8934			6x8x13BH	B6J_BH	B6JPBH	B6JRMBH					X		1201-1800	1400-2000	1400-1700		
9112			4x5x15BL	B4EX_BL	B4EXPBL			B4EXQBL			X		1201-1800			1600-2200	
8443			5x6x15BH	B5EX_BH	B5EXPBH			B5EXQBHS			X		1201-1800			1600-2300	
7452			6x5x15BL	B6EX_BL	B6EXPBL	B6EXRBL	B6EXRBL				X		1201-1800	1200-2000	1200-1800		
8856			6X8X15BM	B6EX_BM				B6EXQBM								1600-2000	
8845			6x8x15BH	B6EX_BH	B6EXPBH	B6EXRBH	B6EXRBH				X		1201-1800	1400-1900	1400-1700		
3333A			6x8x15.5BH	B6XT_BH-15.5"				B6XTQBH-15.5"								1600-1900	
3333B			6x8x14BH	B6XT_BH-14"				B6XTQBH-14"			X					1600-2000	
6469			4x5x18BM	B4EY_BM	B4EYPBM	B4EYRMBM	B4EYRMBM	B4EYQBM			X		1201-1800	1400-2100	1400-1800	1400-2100	
5025	EY	18"	4x5x18BH	B4EY_BH	B4EYPBH	B4EYMBH	B4EYMBH	B4EYQBH			X		1201-1800	1200-2000	1400-1700	1000-2100	

PRODUCT INDEX

CENTRIFUGAL PUMPS

B SERIES

