

**Weatherford®****Pumping Unit Inspection #E234943-20210813085608**

CUSTOMER	SERVICE LOCATION	LEASE	WELL NUMBER
ND Corporation	Williston, ND	ND Yard	ND Yard

**GENERAL INFORMATION**

SUBMITTED DATE	08/13/2021
ORDER #	
PUMPER/GAUGER	
LATITUDE	48.344503
LONGITUDE	-103.040979
CUSTOMER REPRESENTATIVE	MARLON HARRY
UNIT DESIGNATION	1100-500-306
API NUMBER	
UNIT SERIAL NUMBER	03209-320-0870
GEAR REDUCER SERIAL NUMBER	9-729
UNIT NOT IN OPERATION	NO
UNIT NOT IN OPERATION DESCRIPTION	
UNIT NOT INSPECTED	NO
UNIT NOT INSPECTED DESCRIPTION	
PRIMARY JOB TASK / PURPOSE FOR BEING ON-SITE	INSPECTION
MANUFACTURE DATE	
CURRENT INSPECTION DATE	8/13/2021 8:56:08 AM
THIS IS A UNIT TRANSFER	NO
NEXT INSPECTION ON	
BARCODE / ASSET NUMBER	
CUSTOMER SPECIFIC INFORMATION	
UNIT SHUT DOWN UPON ARRIVAL	NO
UNIT SHUT DOWN FOR INSPECTION	NO
THIS IS A NEW UNIT INSTALLATION	NO

**Weatherford®****Pumping Unit Inspection #E234943-20210813085608**

CUSTOMER	SERVICE LOCATION	LEASE	WELL NUMBER
ND Corporation	Williston, ND	ND Yard	ND Yard

**GENERAL INFORMATION**

INSTALLATION DATE	
WEATHERFORD INSPECTOR	BROOKS, BRANDON
I HAVE REVIEWED THE ENERGY ISOLATION AND PREVENTATIVE MAINTENANCE TWIS AS APPLICABLE	YES

**NOTES**

LIST ALL DETAILS OF THE INSPECTION, MAINTENANCE PROCEDURES OF NOTE	UNIT LAYING OVER IN ND YARD. DAMAGE TO FRONT COUNTERWEIGHT DOORS UPPERS AND LOWERS. SPEED SENTRY MISSING . GEARBOX HUB MISSING. BELT GUARD AND LADDER CAGE HARDWARE MISSING. HOLE IN FRONT OF TOWER. LOAD BELT HAS FRAYED EDGE ON LEFT SIDE. CROWN HOOD LATCH DAMAGED AND NEED REPLACED . MISSING POWER BAND FOR MOTOR. COULDN'T OPEN DOORS DUE TO THE DAMAGE TO CHECK GUIDE WHEELS. WIND GUARD HARDWARE MISSING. UNIT IS LAID OVER COULD NOT DO A FULL INSPECTION.
--	---

**FACILITY SIGNS**

FACILITY SIGNS MISSING	REGULATED CONFINED SPACE
------------------------	--------------------------

**SEALS AND BEARINGS**

RIGHT TOP DRUM BEARING	GOOD CONDITION
RIGHT TOP DRUM SEAL	REPAIR/REPLACE
LEFT TOP DRUM BEARING	GOOD CONDITION
LEFT TOP DRUM SEAL	GOOD CONDITION
TOP SPROCKET BEARINGS	GOOD CONDITION
TOP SPROCKET SEALS	GOOD CONDITION
TRAVERSING MECHANISM BEARINGS <a href="#">1</a>	CONDITION REQUIRES UNIT SHUTDOWN
TRAVERSING MECHANISM SEALS <a href="#">2</a>	CONDITION REQUIRES UNIT SHUTDOWN

**BRAKING SYSTEM**

EMERGENCY BRAKE ADJUSTMENTS MADE	GOOD, NO ADJUSTMENTS REQUIRED
MANUAL BRAKE ADJUSTMENTS MADE	GOOD, NO ADJUSTMENTS REQUIRED

**Weatherford®****Pumping Unit Inspection #E234943-20210813085608**

CUSTOMER	SERVICE LOCATION	LEASE	WELL NUMBER
ND Corporation	Williston, ND	ND Yard	ND Yard

**BRAKING SYSTEM**

BRAKE RODS FUNCTIONING PROPERLY	YES
MANUAL BRAKE PAD THICKNESS	FAIR
EMERGENCY BRAKE PAD THICKNESS	FAIR
BRAKE ROTOR CONDITION	GOOD CONDITION
EMERGENCY ACTUATOR OPERABLE <a href="#">3</a>	NO
MANUAL BRAKE TENSION	GOOD
EMERGENCY BRAKE TENSION	GOOD
PROXIMITY SENSOR AIR GAP	GOOD

**GROUND LEVEL**

LOAD BELT PINS AND KEEP BARS	GOOD CONDITION
BRIDLE / BANANA BAR	GOOD CONDITION
POLISHED ROD CONDITION <a href="#">4</a>	CONDITION REQUIRES UNIT SHUTDOWN
POLISHED ROD LINER CONDITION	NA
ROD ROTATOR INSTALLED	NO
ROD ROTATOR FUNCTIONAL	
AMPS ON UPSTROKE (ROD AMPS)	
AMPS ON DOWNSTROKE (WEIGHT AMPS)	
AMP OFFAGE	
UNIT BALANCE	NOT CHECKED
STROKES PER MINUTE	0.0
GAS ENGINE APPEARS TO BE STRAINING	
WEATHERFORD REPRESENTATIVE HAS BEEN CONTACTED	
CUSTOMER HAS BEEN CONTACTED	
ADDED COUNTERWEIGHT	NO

**Weatherford®****Pumping Unit Inspection #E234943-20210813085608**

CUSTOMER	SERVICE LOCATION	LEASE	WELL NUMBER
ND Corporation	Williston, ND	ND Yard	ND Yard

GROUND LEVEL	
POUNDS OF WEIGHT ADDED	
UNIT OPERATING WITH VSD	YES
VSD MAKE	OTHER
PEAK LOAD SHOWN ON VFD	NOT SELECTED
UNIT OPERATING IN RACE TRACK MODE/TRIM SPEED ENABLED	NO
REVERSAL TOP OF STROKE SPM	
REVERSAL BOTTOM OF STROKE SPM	
UPSTROKE SPM	
DOWNSTROKE SPM	
MURPHY VIBRATION SENSOR <a href="#">5</a>	CONDITION REQUIRES UNIT SHUTDOWN
SPEED SENTRY MODEL	
OVERSPEED SET POINT	0.0
UNDERSPEED SET POINT	0.0
SPEED SENTRY MEMORY RECORDING	NO
OVERSPEED SHUTDOWN	NOT WORKING
UNDERSPEED SHUTDOWN	NOT WORKING
CUSTOMER SPECIFIC SPEED SENTRY SHUTDOWN	NOT WORKING
TOWER BASE TO SKID BOLTS	REPLACEMENT REQUIRED
ELECTRIC MOTOR GREASED	NA
RUBBER BOOT	GOOD CONDITION
ROTAFLEX TOWER CONDITION	GOOD CONDITION
OIL LEAKS	NONE
OIL LEAKS OTHER DESCRIPTION	

**Weatherford®****Pumping Unit Inspection #E234943-20210813085608**

<b>CUSTOMER</b>	<b>SERVICE LOCATION</b>	<b>LEASE</b>	<b>WELL NUMBER</b>
ND Corporation	Williston, ND	ND Yard	ND Yard

**GROUND LEVEL**

CONFIRMED SET BACK DISTANCE(MEASURED FROM THE CENTER OF THE WELLBORE TO FRONT OF CONCRETE BASE WITH STRING LINE)	NOT CHECKED
UNIT ALIGNMENT	IN ALIGNMENT
UNIT LEVEL	LEVEL
UPPER LADDER & CAGE CONDITION	GOOD CONDITION
LOWER LADDER & CAGE CONDITION	GOOD CONDITION
CARRIER BAR CONDITION	GOOD CONDITION
TIE-DOWNS CONDITION	GOOD CONDITION
CONCRETE BASE CONDITION	GOOD CONDITION
NOSE PAD CONDITION	NA
PIER CONDITION	NA
I-BEAM CONDITION	NA
LOAD BELT CONDITION (VISUAL VIEW FROM OUTSIDE OF UNIT)	REPLACEMENT REQUIRED

**STRUCTURAL CRACKS**

ARE THERE STRUCTURAL CRACKS PRESENT?	NO
IF PRESENT, HAVE STRUCTURAL CRACKS BEEN IDENTIFIED BY PAINT?	
DESCRIBE SPECIFIC LOCATION OF STRUCTURAL CRACK(S) (ADD IMAGES OF STRUCTURAL CRACKS PRESENT TO LAST PAGE OF INSPECTION)	

**GEAR REDUCER BEARINGS/BUSHINGS**

LOW SPEED CONDITION	NEEDS FURTHER INSPECTION
INTERMEDIATE SPEED CONDITION	NEEDS FURTHER INSPECTION
HIGH SPEED CONDITION	NEEDS FURTHER INSPECTION

**Weatherford®****Pumping Unit Inspection #E234943-20210813085608**

CUSTOMER	SERVICE LOCATION	LEASE	WELL NUMBER
ND Corporation	Williston, ND	ND Yard	ND Yard

**GEAR REDUCER SEALS/GASKETS**

LOW SPEED CONDITION	NEEDS FURTHER INSPECTION
INTERMEDIATE SPEED CONDITION	NEEDS FURTHER INSPECTION
HIGH SPEED CONDITION	NEEDS FURTHER INSPECTION

**GEAR CONDITION**

LOW SPEED GEAR	NEEDS FURTHER INSPECTION
LOW SPEED PINION	NEEDS FURTHER INSPECTION
HIGH SPEED GEAR	NEEDS FURTHER INSPECTION
HIGH SPEED PINION	NEEDS FURTHER INSPECTION

**OIL CONDITION**

OIL LEVEL	LOW
OIL CONDITION	REQUIRES REPLACEMENT OF ALL OIL

**PRIME MOVER**

TYPE (GAS/ELECTRIC)	ELECTRIC
BRAND	
MODEL	BALDOR
SERIAL NUMBER	C0212045045
FRAME NUMBER	445T
RPM	1125
HORSEPOWER	100
SHEAVE DIAMETER (INCHES)	16
BELT CONDITION	REPLACEMENT REQUIRED
SHAFT CONDITION	GOOD CONDITION
SHAFT SIZE (INCHES)	3 3/8
GEAR REDUCER SHEAVE CONDITION	GOOD CONDITION

**Weatherford®****Pumping Unit Inspection #E234943-20210813085608**

<b>CUSTOMER</b>	<b>SERVICE LOCATION</b>	<b>LEASE</b>	<b>WELL NUMBER</b>
ND Corporation	Williston, ND	ND Yard	ND Yard

**PRIME MOVER**

GEAR REDUCER SHEAVE DIAMETER (INCHES)	20
GAS ENGINE OIL USED (GALLONS)	
GAS ENGINE OIL REQUIRED FILTERING	
OIL SAMPLE TAKEN	

**INSIDE (FRONT) COUNTERWEIGHT DOORS**

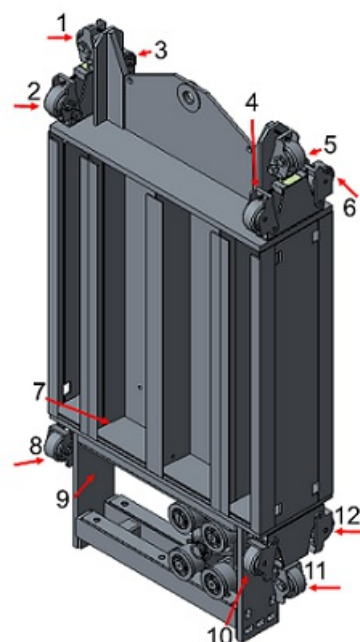
FRONT COUNTERWEIGHT ROTAFLEX DOORS CONDITION	REPAIR REQUIRED
FRONT UPPER COUNTERWEIGHT ROTAFLEX DOORS CONDITION	REPAIR REQUIRED
REMOVED SHIPPING BLOCKS BETWEEN TOWER BEAM AND COUNTERWEIGHT BOX DURING INSTALLATION	YES
OIL SUMP RESERVOIR	CLEANING AND NEW OIL REQUIRED
PROPER OIL LEVEL OF SUMP	ADDITIONAL OIL REQUIRED
SUMP OILING SYSTEM FREE OF OBSTRUCTIONS AND PROPERLY OILING	REPAIR REQUIRED
INTERNAL LOAD BELT CONDITION AND CONNECTION TO WEIGHT BOX, LOAD BELT PINS	GOOD CONDITION
BELT AND METAL SHAVINGS PRESENT INSIDE OF TOWER	NO

**Pumping Unit Inspection #E234943-20210813085608**

CUSTOMER	SERVICE LOCATION	LEASE	WELL NUMBER
ND Corporation	Williston, ND	ND Yard	ND Yard

**GUIDE WHEELS**

GUIDE WHEEL #1	CONDITION REQUIRES UNIT SHUTDOWN
GUIDE WHEEL #2	CONDITION REQUIRES UNIT SHUTDOWN
GUIDE WHEEL #3	CONDITION REQUIRES UNIT SHUTDOWN
GUIDE WHEEL #4	CONDITION REQUIRES UNIT SHUTDOWN
GUIDE WHEEL #5	CONDITION REQUIRES UNIT SHUTDOWN
GUIDE WHEEL #6	CONDITION REQUIRES UNIT SHUTDOWN
GUIDE WHEEL #7	CONDITION REQUIRES UNIT SHUTDOWN
GUIDE WHEEL #8	CONDITION REQUIRES UNIT SHUTDOWN
GUIDE WHEEL #9	CONDITION REQUIRES UNIT SHUTDOWN
GUIDE WHEEL #10	CONDITION REQUIRES UNIT SHUTDOWN
GUIDE WHEEL #11	CONDITION REQUIRES UNIT SHUTDOWN
GUIDE WHEEL #12	CONDITION REQUIRES UNIT SHUTDOWN


**COUNTERWEIGHT BOX**

COUNTERWEIGHT BOX IS PROPERLY ALIGNED INSIDE OF THE TOWER	NO
SWIVEL SHAFT (INCHES)	
DRIVE SPROCKET (INCHES)	



**Weatherford®****Pumping Unit Inspection #E234943-20210813085608**

CUSTOMER	SERVICE LOCATION	LEASE	WELL NUMBER
ND Corporation	Williston, ND	ND Yard	ND Yard

**COUNTERWEIGHT BOX**

DRIVE SPROCKET CONDITION	REPAIR REQUIRED
LOAD BELT PIN AND SNAP RINGS CHECKED	NO
DRIVE CHAIN TENSION CHECKED	NO
DRIVE CHAIN TENSION ADJUSTED	NOT REQUIRED
DRIVE CHAIN SIDE TO SIDE DEFLECTION (IN INCHES)	<1"
DRIVE CHAIN CONDITION	CONDITION REQUIRES UNIT SHUTDOWN
SWIVEL SHAFT CONDITION	REPAIR REQUIRED
CARRIAGE ASSEMBLY CONDITION <a href="#">6</a>	CONDITION REQUIRES UNIT SHUTDOWN
FRONT CARRIAGE WHEELS CONDITION	REPAIR REQUIRED
FRONT CARRIAGE WHEEL BEARINGS CONDITION	NOT CHECKED
VERIFY CARRIAGE FRAME BOLTS ARE TORQUED TO 250 FT. LBS. (8 EACH)	REPAIR REQUIRED
CARRIAGE FRAME BOLTS CONDITION	NOT CHECKED
ALL DOORS PROPERLY SECURED AFTER PM COMPLETION	YES
ALL DOORS NOT PROPERLY SECURED AFTER PM COMPLETION EXPLANATION	
DOORS SECURED WITH ZIP-TIE, LOCK, OR NUMBERED SEAL (IF REQUIRED BY CUSTOMER OR REGION)	NA

**INSIDE (BACK) PANELS ABOVE GEAR REDUCER**

CHAIN PINS CONDITION	REPAIR REQUIRED
PIN BOLTS AND RETAINING BAR CONDITION	REPAIR REQUIRED
SWIVEL SHAFT (KNUCKLE) CONDITION	REPAIR REQUIRED
BACK CARRIAGE WHEELS CONDITION	REPAIR REQUIRED
BACK CARRIAGE WHEEL BEARINGS CONDITION	NOT CHECKED

**INSIDE MID-TOWER**

MID-TOWER DOORS AND ENCLOSURE CONDITION	GOOD CONDITION
---	----------------

**Weatherford®****Pumping Unit Inspection #E234943-20210813085608**

CUSTOMER	SERVICE LOCATION	LEASE	WELL NUMBER
ND Corporation	Williston, ND	ND Yard	ND Yard

**INSIDE MID-TOWER**

TOP SPROCKET LUBRICATED	NO
TOP SPROCKET ASSEMBLY CONDITION	GOOD CONDITION
GREASE ADDED TO TOP SPROCKET	NO
BEARING NUTS AND LOCKER WASHERS CONDITION	GOOD CONDITION
TOP SPROCKET ASSEMBLY CHECKED FOR CRACKS AND BENDS IN TUBING	NONE PRESENT
ADJUSTMENT BOLTS AND JAM NUTS CONDITION	GOOD CONDITION
DRIVE CHAIN RETAINING PINS CONDITION	CONDITION REQUIRES UNIT SHUTDOWN
MEASUREMENT FROM CENTER OF THE TOP SPROCKET TO THE OUTSIDE EDGE OF THE TOWER BEAM FLANGE (SHOULD BE 3")	3 INCHES

**TOP TOWER**

HINGE PINS CHECKED BEFORE OPENING THE CROWN HOOD	YES
CROWN HOOD HINGE PINS CONDITION (HINGE PINS ON THE TOP COVER INSPECTED BEFORE OPENING THE CROWN HOOD)	GOOD-SAFE TO OPEN CROWN HOOD
ROLLER DRUM SIDE PLATE CONDITION	GOOD CONDITION
PILLOW BLOCK BEARING SEALS CONDITION	REPAIR REQUIRED
ROLLER DRUM GREASED	NO
TOP DRUM LEAKING GREASE	YES
TOP DRUM BEARINGS CONDITION	GOOD CONDITION
METAL SHAVINGS FOUND ON PILLOW BLOCK HOUSING	NO

**ROLLBACK SYSTEM**

TYPE OF ROLLBACK SYSTEM	NA
ROLLBACK SYSTEM CONDITION	
HYDRAULIC FLUID LEVEL	

**Weatherford®****Pumping Unit Inspection #E234943-20210813085608**

CUSTOMER	SERVICE LOCATION	LEASE	WELL NUMBER
ND Corporation	Williston, ND	ND Yard	ND Yard

**ROLLBACK SYSTEM**BUMP CHECK MOTOR TO CONFIRM PROPER ELECTRIC  
WIRING OF ROLLBACK SYSTEM**RUST**

EXCESSIVE RUST PRESENT

NO

RUST PRESENCE LOCATION

**COMPLETION CONFIRMATION**MAINTENANCE STICKER WITH CREW AND DATE INSTALLED  
ON THE TOWER

NO

MAINTENANCE STICKER INSTALLED DURING INSPECTION

NO

ADDITIONAL ITEMS FOUND REQUIRING ATTENTION

NO

SPECIFICS OF ADDITIONAL ITEMS FOUND

UNIT CONDITIONS WARRANT CONTINUED SHUTDOWN.  
CUSTOMER HAS BEEN NOTIFIED.

YES

**IMAGES**

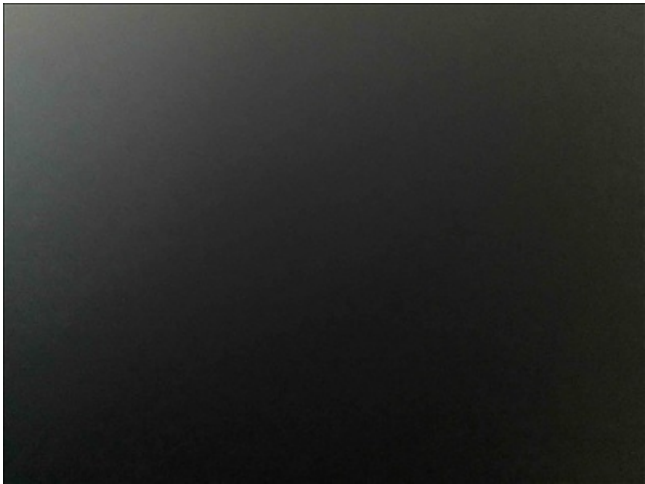
TOTAL NUMBER OF IMAGES

8

**Pumping Unit Inspection #E234943-20210813085608**

CUSTOMER	SERVICE LOCATION	LEASE	WELL NUMBER
ND Corporation	Williston, ND	ND Yard	ND Yard

**IMAGES**



LEASE SIGN



UNIT SERIAL NUMBER

**Pumping Unit Inspection #E234943-20210813085608**

CUSTOMER	SERVICE LOCATION	LEASE	WELL NUMBER
ND Corporation	Williston, ND	ND Yard	ND Yard

**IMAGES**


GEAR REDUCER SERIAL NUMBER



PRIME MOVER SERIAL NUMBER

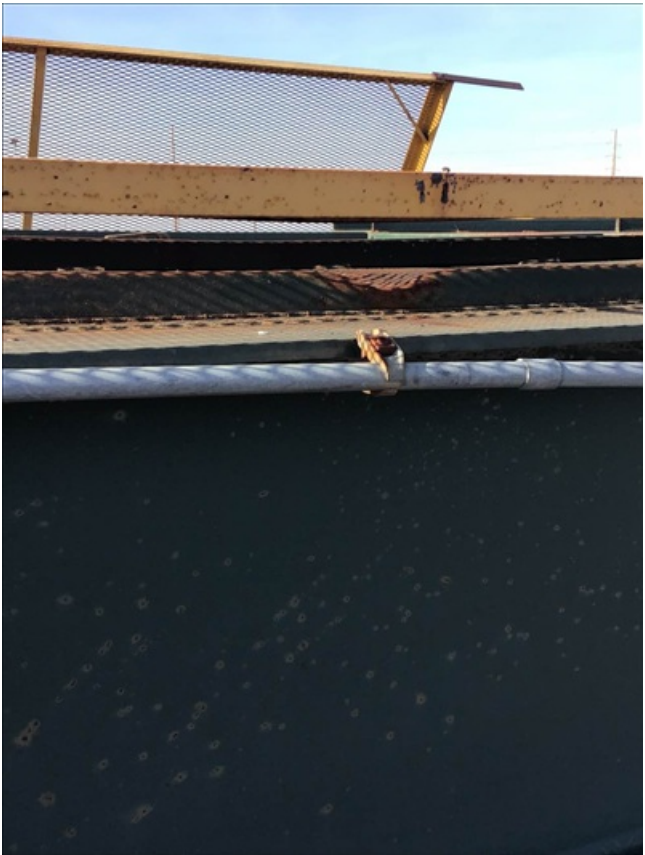
**Pumping Unit Inspection #E234943-20210813085608**

CUSTOMER	SERVICE LOCATION	LEASE	WELL NUMBER
ND Corporation	Williston, ND	ND Yard	ND Yard

**IMAGES**



FRONT COUNTERWEIGHT ROTAFLEX DOORS



FRONT UPPER COUNTERWEIGHT ROTAFLEX DOORS



**Pumping Unit Inspection #E234943-20210813085608**

CUSTOMER	SERVICE LOCATION	LEASE	WELL NUMBER
ND Corporation	Williston, ND	ND Yard	ND Yard

**IMAGES**


ROTAFLEX TOWER



CROWN HOOD HINGE PINS

**NOTES:**
**1 TRAVERSING MECHANISM BEARINGS - NOTES**

<b>VALUE</b> CONDITION REQUIRES UNIT SHUTDOWN	<b>REPORTED</b> 8/13/2021	<b>CURRENT STATE</b> IN PROGRESS
---	------------------------------	-------------------------------------

**8/23/2021 4:59 PM E007568**

UNABLE TO CHECK CARRIAGE ASSY. WEIGHT BOX IS AT THE BOTTOM.

**Weatherford®****Pumping Unit Inspection #E234943-20210813085608**

CUSTOMER	SERVICE LOCATION	LEASE	WELL NUMBER
ND Corporation	Williston, ND	ND Yard	ND Yard

**2 TRAVERSING MECHANISM SEALS - NOTES**

VALUE	REPORTED	CURRENT STATE
CONDITION REQUIRES UNIT SHUTDOWN	8/13/2021	IN PROGRESS

**8/23/2021 5:00 PM E007568**

WEIGHT BOX IS AT THE BOTTOM WAS NOT ABLE TO INSPECT CARRIAGE ASSY.

**3 EMERGENCY ACTUATOR OPERABLE - NOTES**

VALUE	REPORTED	CURRENT STATE
NO	8/13/2021	IN PROGRESS

**8/23/2021 5:01 PM E007568**

NO POWER TO THE UNIT NOT ABLE TO CHECK E-BRAKE

**4 POLISHED ROD - NOTES**

VALUE	REPORTED	CURRENT STATE
CONDITION REQUIRES UNIT SHUTDOWN	8/13/2021	IN PROGRESS

**8/23/2021 5:02 PM E007568**

NO P-ROD

**5 MURPHY VIBRATION SENSOR - NOTES**

VALUE	REPORTED	CURRENT STATE
CONDITION REQUIRES UNIT SHUTDOWN	8/13/2021	IN PROGRESS

**8/23/2021 5:04 PM E007568**

NO POWER TO CHECK VIB

**6 CARRIAGE ASSEMBLY CONDITION - NOTES**

VALUE	REPORTED	CURRENT STATE
CONDITION REQUIRES UNIT SHUTDOWN	8/13/2021	IN PROGRESS

**8/23/2021 5:52 PM E007568**

UNABLE TO CHECK UNIT IS STACKED OUT





**Weatherford®**

**Pumping Unit Inspection #E234943-20210813085608**

<b>CUSTOMER</b>	<b>SERVICE LOCATION</b>	<b>LEASE</b>	<b>WELL NUMBER</b>
ND Corporation	Williston, ND	ND Yard	ND Yard