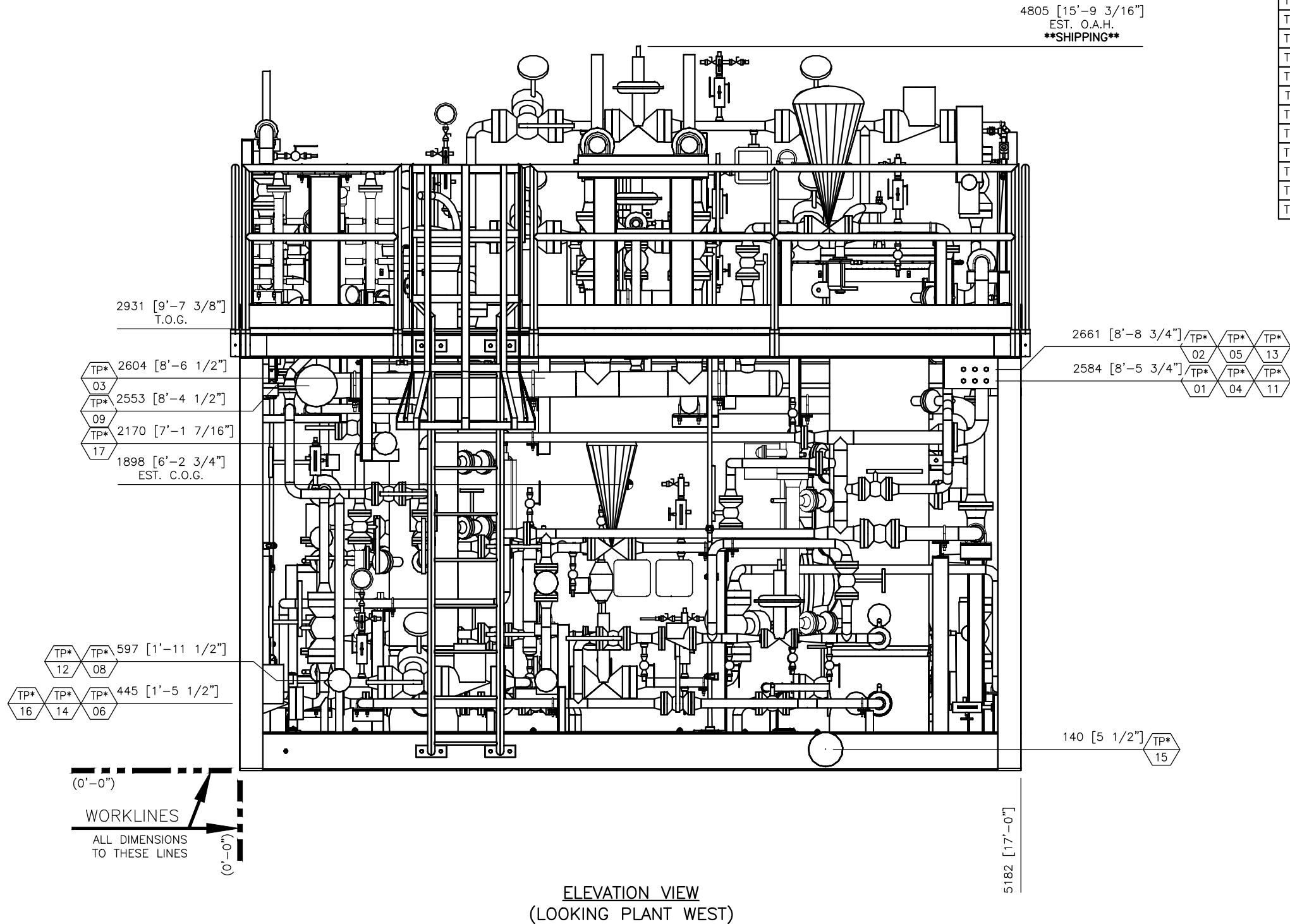


PN



TIE IN SCHEDULE

MK	DESCRIPTION	SIZE/TYPE
TP*-01	TO PSHH-966201-07	1/2" TUBING BULKHEAD
TP*-02	TO SDY-966201-01 CONTROL	1/2" TUBING BULKHEAD
TP*-03	INLET FROM TEST SEPARATOR	3" 900# RTJ C.S.
TP*-04	TO LSHH-966201-03 CONTROL	1/2" TUBING BULKHEAD
TP*-05	TO SDY-966201-02 CONTROL	1/2" TUBING BULKHEAD
TP*-06	INLET FROM 16" STAND PIPE	2" 1500# RTJ C.S.
TP*-08	OUTLET TO POWER GAS USERS	2" 150# RF C.S.
TP*-09	OUTLET TO VENT HEADER	6" 150# RF C.S.
TP*-10	PIT-965201-05 (NG4A-VJBA781201-04)	ELECTRIC J. BOX
TP*-11	TO PSLL-965201-03 (WHPP)	1/2" TUBING BULKHEAD
TP*-12	OUTLET TO INSTRUMENT GAS USERS	2" 150# RF C.S.
TP*-13	TO LSHH-965201-02 CONTROL	1/2" TUBING BULKHEAD
TP*-14	OUTLET TO CLOSED DRAIN	2" 150# RF C.S.
TP*-15	OUTLET TO OPEN DRAIN	4" 150# RF C.S.
TP*-16	OUTLET TO WHCP HYDRAULIC PUMPS	2" 150# RF C.S.
TP*-17	DRAIN FROM 24" BUFFER GAS STORAGE	2" 150# RF C.S.

*** DENOTES 966201 TYPICAL

- NOTES:
- FOR PLAN VIEW SEE DWG. NO.: G-25046-01.
NG4A-CY-VDMEC-0050417
 - FOR LOWER PLAN VIEW SEE DWG. NO.: G-25046-02.
NG4A-CY-VDMEC-0050418
 - FOR END VIEW SEE DWG. NO.: G-25046-04.
NG4A-CY-VDMEC-0050420
 - FOR ISO VIEW SEE DWG. NO.: G-25046-05.
NG4A-CY-VDMEC-0050421
 - ALL DIMENSIONS $\pm 1/4"$.
 - REFERENCE ELEVATION FROM B.O.S. [EL (+) 41'-1 1/2"]



INTEGRATED
FLOW SOLUTIONS

6461 REYNOLDS RD, TYLER, TEXAS, USA 75708
PHONE NUMBER: +1 (903) 595-6511
EMAIL: SUPPORT@IFSOLUTIONS.COM

THIS DRAWING IS THE PROPERTY OF INTEGRATED FLOW SOLUTIONS AND
SHALL NOT BE REPRODUCED, COPIED, LENT, NOR USED FOR ANY PURPOSE
OTHER THAN THAT WHICH IT IS FURNISHED EXCEPT BY WRITTEN PERMISSION.

REV.	DATE	DESCRIPTION	DES	ENG/CHK	PM/APP
3	27OCT14	AS BUILT	RM	CA	LA
2	03JAN13	REVISED PER CUSTOMER COMMENTS	RM	CA	LA
1	26SEP12	REVISED PER CUSTOMER COMMENTS (7/13/2012)	RM	KC	LA
0	06JUL12	APPROVED FOR CONSTRUCTION	RM	KC	LA
A	21MAY12	ISSUED FOR CUSTOMER APPROVAL	RM	KC	LA



CRAYMOND NIG. LTD

PROJECT: SATELLITE FIELDS DEVELOPMENT PROJECT-PHASE 2
CUSTOMER NAME: DELTA AFRIK ENGINEERING LTD.
END USER:
SYSTEM DESCRIPTION: INSTRUMENT & POWER GAS SKID
TAG NUMBER: NG4A-VMK966201
PLATFORM: IBOT A WHP
CUSTOMER PO#: 10108-1001
ESTIMATED DRY WEIGHT: 12791 KG [28,200 LBS]
ESTIMATED OPERATING WEIGHT: 13119 KG [28,923 LBS]

GENERAL ARRANGEMENT
INSTRUMENT AND POWER GAS SKID
(NG4A-VMK966201)

CLIENT No.: NG4A-CY-VDMEC-0050419					
SCALE: 3/8"=1'-0"	SECTION	JOB	SHEET	TOTAL SHEETS	REV.
PM.: L. AGUILAR	G - 25046-03			5	3