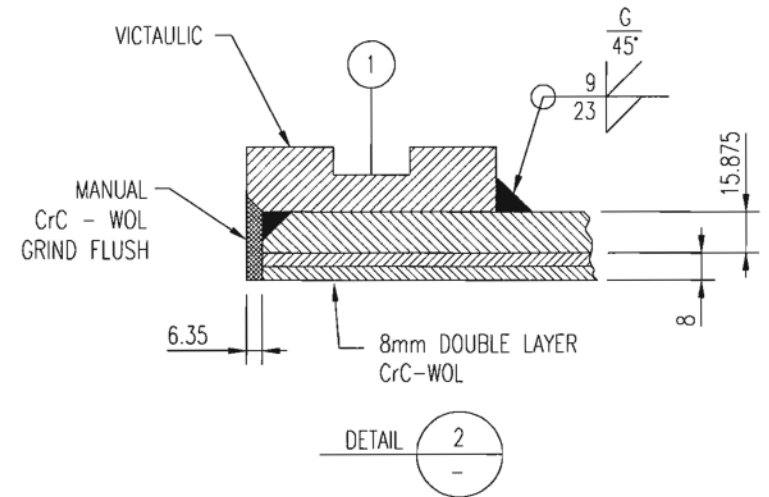
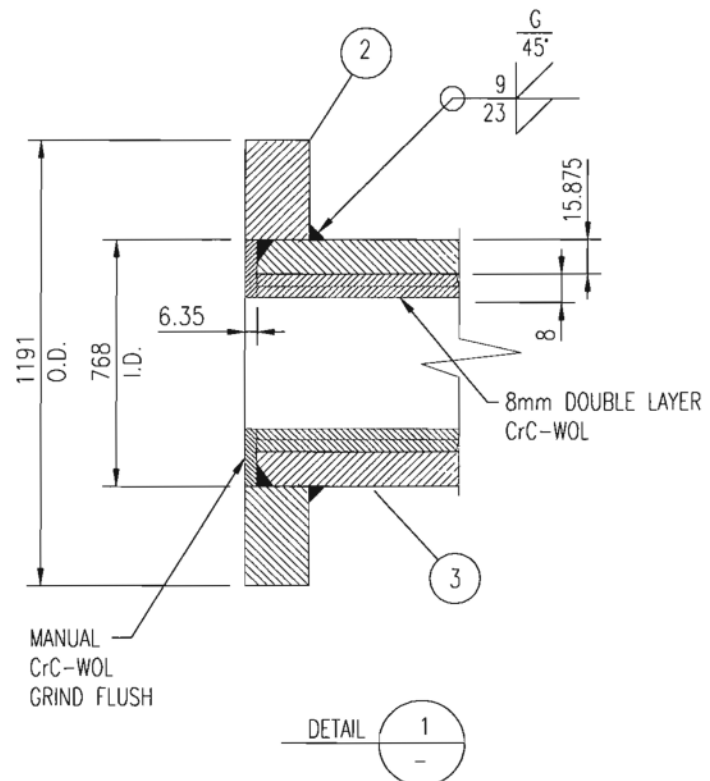


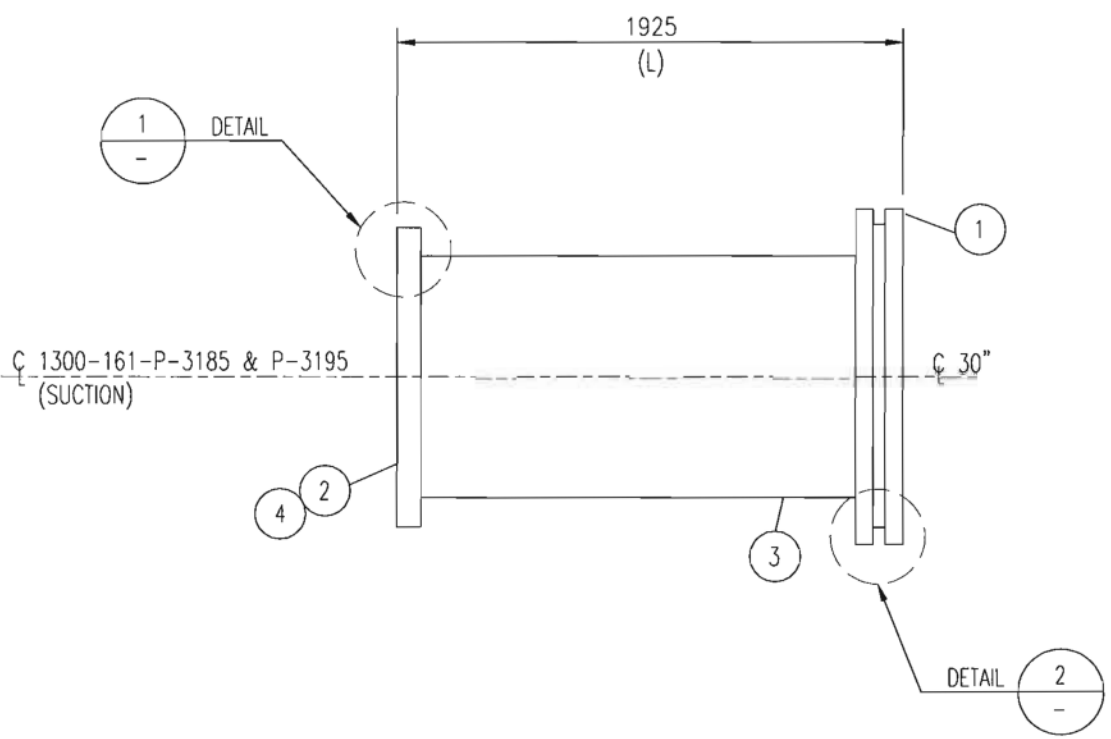
074-1300-080-161-008 01

MicroStation V8

CADD DRAWING NO MANUAL CHANGES



REFER TO SPEC: KP 03-74-046 FIGURE C-7



ITEM	DESCRIPTION	SIZE	QTY
1	VICTAULIC STYLE 28 COUPLING, D RING, 6 SEGMENT COUPLING BOLT SET AND FLUSH SEAL TYPE GASKET	30"	1
2	COMPANION FLANGE, SO, 30.25" I.D. (SUPPLIED BY PUMP VENDOR)	-	1
3	PIPE, SCH. 30, API 5L GR. B, ASME B36.10 BBE	30"	L
4	STUD BOLTS, 1 3/4" DIA x 380mm LG ASTM A193 GR B7, w/ 3 HEAVY HEX NUTS EA A194 GR 2H	-	12

SERVICE: COARSE TAILINGS
CODE: ASME B31.11 ADDENDUM 2002 EDITION
DESIGN PRESSURE: 3447 kPag DESIGN TEMPERATURE: 93°C
PRESSURE TEST: 3800 kPag
PAIN: NONE STRESS RELIEVE: NONE

- NOTES:
- ALL WELDING AND NDT SHALL BE IN ACCORDANCE WITH ASME B31.11 AND SPECIFICATIONS GP-29-03-02 & GP-29-03-02 SKP, LATEST REVISION.
 - CHROME CARBIDE WELD OVERLAY AS PER SPEC KP 03-74-046, LATEST REVISION.
 - GASKET CONTACT SURFACE SHALL BE IN ACCORDANCE WITH PIPING SPEC KP 03-74-047 PARA 12.5, LATEST REVISION.
 - ALL SHARP EDGES ARE TO BE REMOVED.
 - PERMANENTLY TAGGED IDENTIFICATION WITH A STAINLESS STEEL NAME PLATE IN ACCORDANCE WITH SPECIFICATION KP-03-74-046, LATEST REVISION. STAMPING SHALL ALSO INCLUDE SPECIALTY ITEM NUMBER AND DRAWING NUMBERS.
 - UON - UNLESS OTHERWISE NOTED
 - BOLTHOLES TO STRADDLE CENTERLINE UON.

SPECIAL ITEM NUMBER	IORL ITEM NUMBER
SP-K3799	161-3185-02
SP-K3800	161-3195-14

PIPE SPEC: B51K
CHROMIUM CARBIDE WELD OVERLAY

8mm DOUBLE LAYER MIN. UON

IORVL DISC. APPR.	IORVL SUP. APPR.	BY	DATE	REV
<i>[Signature]</i>	<i>[Signature]</i>		03/24/2011	JFC

P&ID: 074-1300-020-161-101 & 107 01
LINE #: 30-JJ-161-2501 & 2506-B50X-ON



CB&I
APEGGA PERMIT TO PRACTICE P10117
PERMIT STAMP

NO.	DATE	REVISIONS	DRAWN	CHECK	DESIGN	APPR.
			DRAFTING		ENGINEERING	
1	11 02 07	ISSUED FOR CONSTRUCTION (IFC)	JSH	JLW	JMM	GSG
0	10 10 12	ISSUED FOR DESIGN (IFD)	RKD	JMG	JMM	LWW

CONTRACTOR NAME		CONTRACTOR DWG. NO	
CB&I		CBH-1300-132-DT-0042-01	
SCALE NTS	IOR DRAWING NUMBER	REV.	
	074-1300-080-161-008 01	1	

Version: 4
B-STD