

**NOTES:**

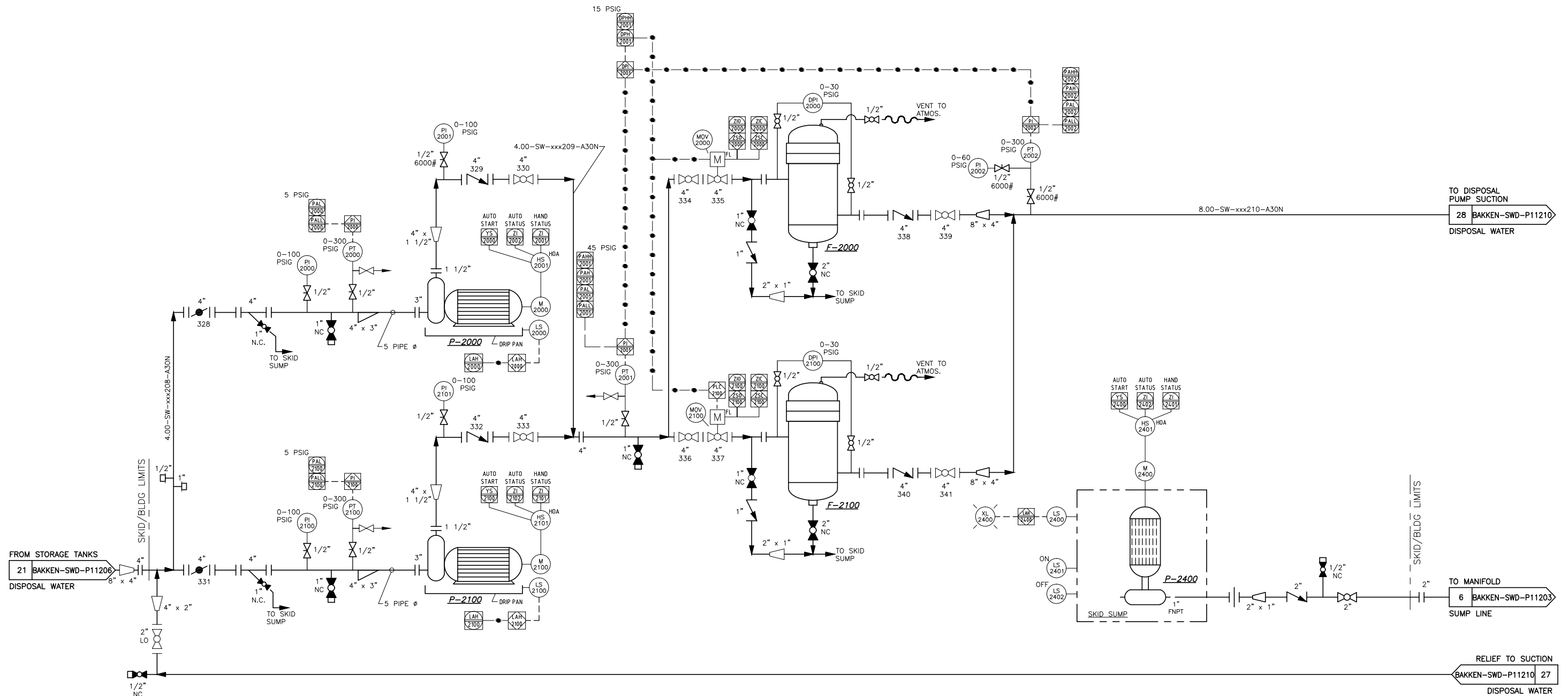
1. VALVES TO BE CS/UCT COATED UNLESS PROVIDED ALLOY 20.
2. PIPE TO RECEIVE DUPONT #70008 INTERNAL COATING.
3. POTENTIAL RO or GLOBE VALVE FOR PUMP BACK PRESSURE AT START-UP.

S-2000  
WATER DISPOSAL  
SKID PACKAGE

P-2000 & P-2100  
CENTRIFUGAL CHARGE PUMP  
FLOWSERVE/DURCO 1K3X1.5-82RV  
3" 150# FF SUCT., 1 1/2" 150# FF DISCH.,  
FEAT. CD4MCU CONSTRUCTION  
W/ 15 HP, 3600 RPM, 460/3/60,  
CLASS I DIV. II, 254T FRAME  
OPERATING CONDITION: 6,000 BPD @ 50 PSIG

F-2000 & F-2100  
BAG FILTER VESSEL  
FSI: FSPN-800, TYPE 4, (4) #2 SIZE BAGS  
4" 150# RF INLET/OUTLET, CS MATERIAL W/  
DUPONT #70008 INTERNAL COATING  
MAWP: 150 PSIG @ 250°F  
OPERATING CONDITION: 50 PSIG @ AMBIENT

P-2400  
SUMP PUMP  
STANCOR P-20 CE  
1" DISCH.,  
W/ GEMS FLOAT SWITCH,  
W/ 1 1/2 HP, 480/3/60,



REVISED	SWO # LOG
PREPARED BY: ZR	SWO#1 1085658
DATE: 03/14/12	SWO#2 1085659
REVISION # 5	SWO#3 1085660
APPROVED BY: CC	SWO#4
SWO # SEE SWO# LOG	SWO#5

NOTICE: This drawing has not been published but rather has been prepared for "HESSE CORPORATION" by Power Service solely in respect of the construction, operation, and maintenance of the facility named in the title block and shall not be used for any other purpose or furnished to any other party, without the express written consent of Power Service, Inc.

NO.	DATE	BY	DESCRIPTION	CHK'D	APPR.	DWG NO.	TITLE
5	03/14/12	ZR	CORRECTIONS PER REVIEW	CC	-		
4	02/23/12	ZR	CORRECTIONS PER REVIEW	CC	-		
3	02/01/12	ZR	CORRECTIONS PER REVIEW	CC	-		
2	01/12/12	ZR	ADJUST INST. PER REVIEW	CC	-		
1	10/27/11	ZR	ADJUST INST. PER REVIEW	CC	-		
0	07/13/11	CR	FOR CONSTRUCTION	ZR	CC		
2A	07/07/11	ZR	EDITS PER 07/06/11 REVIEW	CC	-		
1A	06/22/11	ZR	EDITS PER CUST. REVIEW	CC	-		
A	05/24/11	ZR	FOR APPROVAL	CC	-	HSCP-INJ-LO-1	GENERAL ARRANGEMENT LAYOUT

**POWER SERVICE, INC.**  
CASPER, WYOMING, USA  
(307) 472-7722

THIS DRAWING IS THE PROPERTY OF POWER SERVICE, INC. CASPER, WYOMING, USA.			
PROCESS & INSTRUMENTATION DIAGRAM			
WATER DISPOSAL PACKAGE			
COS: 6,000 BPD @ 1,200 PSIG			
SHEET: 1 OF 2	PROJECT NO. SEE-STAMP	DWG. NO. D-HSCP-INJ-PID-1	REV. 5

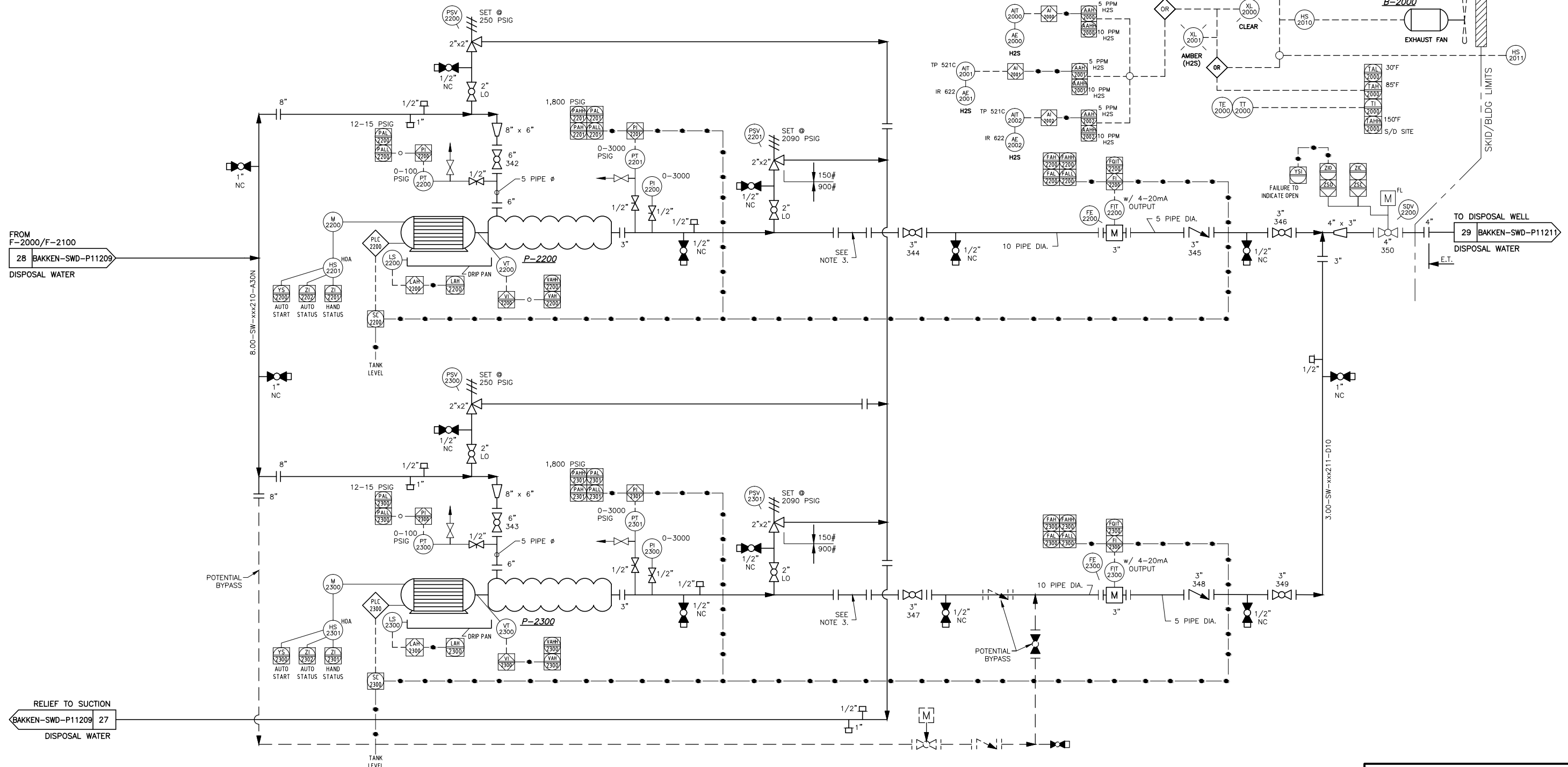
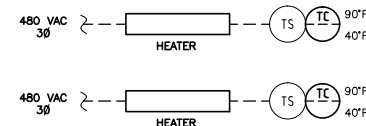
# NOTES:

1. VALVES TO BE CS/UCT COATED UNLESS PROVIDED ALLOY 20.
2. PIPE TO RECEIVE DUPONT #70008 INTERNAL COATING.
3. POTENTIAL RO or GLOBE VALVE FOR PUMP BACK PRESSURE AT START-UP.

S-2000  
WATER DISPOSAL  
SKID PACKAGE

P-2200 & P-2300  
MULTI-STAGE HORIZ. CENTRIFUGAL PUMP  
REDA HPS MOD. S175N 54 STAGE,  
6" 150# RF SS SUCT., 3" 900# RF SS DISCH.,  
W/ 250 HP, 3600 RPM, 460/3/60,  
CLASS I DIV. II GRP. D, TBD FRAME  
OPERATING CONDITION: 6,000 @ 1,200 PSIG

B-2000, B-2100, & B-2200  
EXHAUST FAN  
DAYTON STK# 3XK51  
SIZE: 12"  
W/ 1/4 HP, 1725 RPM, 115/1/60,  
XP MOTOR



REVISED
PREPARED BY: ZR
DATE: 03/14/12
REVISION # 5
APPROVED BY: CC
SWO # SEE SWO# LOG

SWO # LOG
SWO#1 1085658
SWO#2 1085659
SWO#3 1085660
SWO#4
SWO#5

NOTICE: This drawing has not been published but rather has been prepared for "NESS CORPORATION" by Power Service solely in respect of the construction, operation, and maintenance of the facility named in the title block and shall not be used for any other purpose or furnished to any other party, without the express written consent of Power Service, Inc.

NO.	DATE	BY	DESCRIPTION	CHK'D	APPR.	DWG NO.	TITLE
5	03/14/12	ZR	CORRECTIONS PER REVIEW	CC	-		
4	02/23/12	ZR	CORRECTIONS PER REVIEW	CC	-		
3	02/01/12	ZR	CORRECTIONS PER REVIEW	CC	-		
2	01/12/12	ZR	ADJUST INST. PER REVIEW	CC	-		
1	10/27/11	ZR	ADJUST INST. PER REVIEW	CC	-		
0	07/13/11	CR	FOR CONSTRUCTION	ZR	CC		
1A	06/22/11	ZR	EDITS PER CUST. REVIEW	CC	-		
A	05/24/11	ZR	FOR APPROVAL	CC	-	HSCP-INJ-LO-1	GENERAL ARRANGEMENT LAYOUT

**POWER SERVICE, INC.**  
CASPER, WYOMING, USA  
(307) 472-7722

THIS DRAWING IS THE PROPERTY OF POWER SERVICE, INC. CASPER, WYOMING, USA.

PROCESS & INSTRUMENTATION DIAGRAM  
WATER DISPOSAL PACKAGE  
COS: 6,000 BPD @ 1,200 PSIG

DWN BY	CHK'D BY	APP'D BY	ENGINEER	DATE DWN	SCALE	SHEET	PROJECT NO.	DWG. NO.	REV.
ZR	CC	-	-	05/24/11	N.T.S.	2 OF 2	SEE-STAMP	D-HSCP-INJ-PID-1	5